

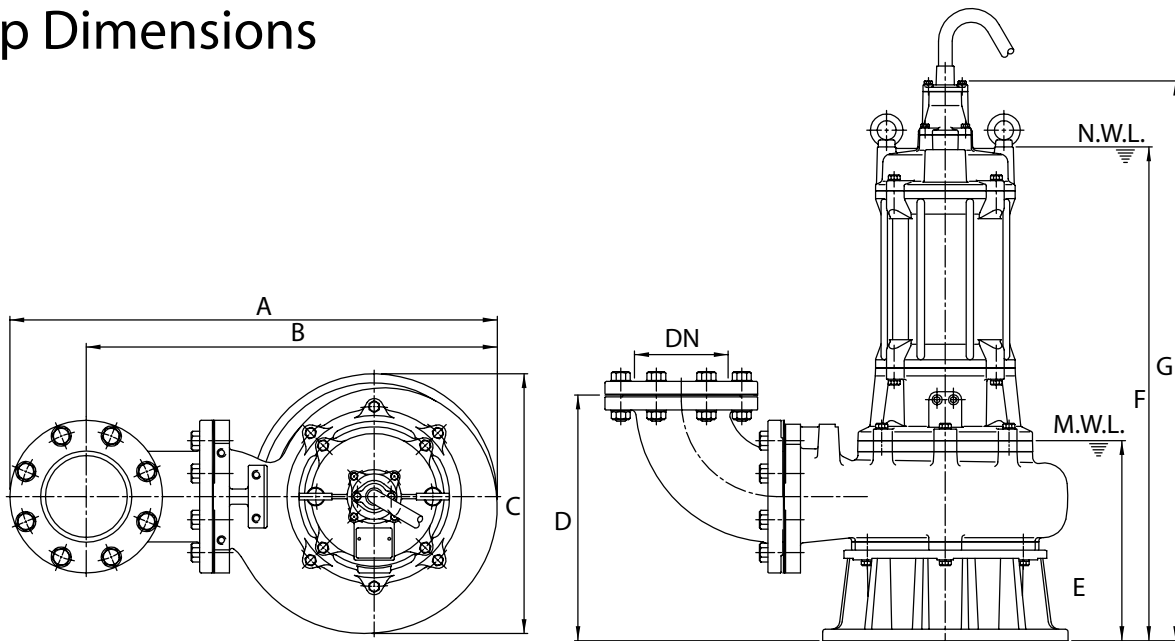


Dimensional Drawing

SNC Models
01/15/2005

SNC-6-XX-100; SNC-6-XX-150; SNC-6-XX-200; SNC-8-XX-150; SNC-8-XX-200

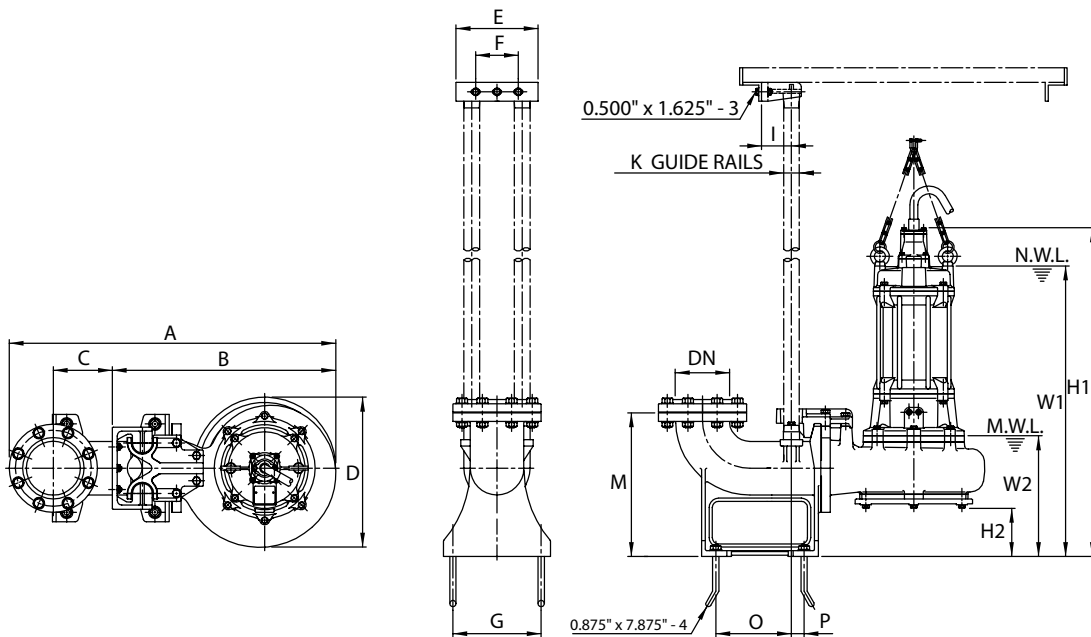
Pump Dimensions



TYPE	DN	A	B	C	D	E	F	G
SNC-6-XX-100	6	35.00	29.38	17.63	19.38	14.38	30.00	34.25
SNC-6-XX-150	6	35.25	29.75	18.75	17.75	14.50	35.63	40.38
SNC-6-XX-200	8	35.25	29.75	18.75	17.75	14.50	35.63	40.38
SNC-8-XX-150	8	41.13	34.63	19.75	19.00	14.63	35.88	40.63
SNC-8-XX-200	8	41.13	34.63	19.75	19.00	14.63	35.88	40.63

N.W.L.: Normal water level
M.W.L.: Minimum water level

Easy Lift GRS - Guide Rail System Dimensions



TYPE	DN	A	B	C	D	E	F	G	I	K	M	O	P	W1	W2	H1	H2
SNC-6-XX-100	6	40.75	27.88	7.38	17.63	10.25	5.38	11.00	3.75	2.00	17.88	9.50	1.63	30.63	15.00	34.88	7.18
SNC-6-XX-150	6	40.75	27.88	7.38	17.63	10.25	5.38	11.00	3.75	2.00	17.88	9.50	1.63	36.25	15.13	41.00	7.18
SNC-6-XX-200	8	40.75	27.88	7.38	17.63	10.25	5.38	11.00	3.75	2.00	17.88	9.50	1.63	36.25	15.13	41.00	7.18
SNC-8-XX-150	8	45.63	29.75	9.00	19.38	11.75	6.88	12.63	3.75	2.00	21.50	10.63	1.63	37.38	16.13	42.13	6.88
SNC-8-XX-200	8	45.63	29.75	9.00	19.38	11.75	6.88	12.63	3.75	2.00	21.50	10.63	1.63	37.38	16.13	42.13	6.88

All dimensions are in inches unless otherwise noted.

SNC-6 and SNC-8 models must remove base when using Easy Lift GRS - Guide Rail System.